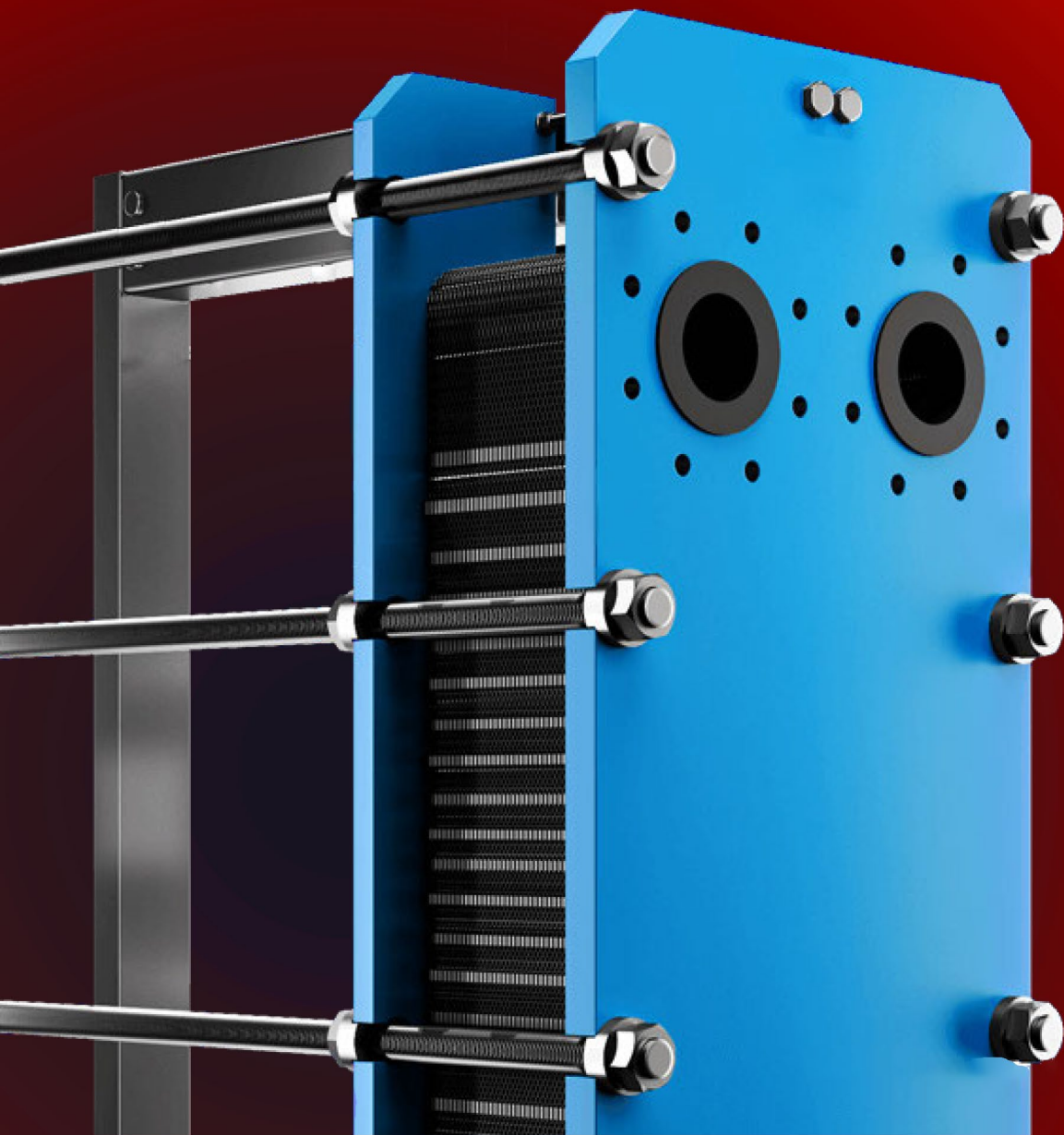


HEAT EXCHANGE EXPERTS AROUND YOU



ABOUT US



High
quality



Attractive
conditions



Short
delivery time



Extensive
services

Who we are:

Aiks is a professional plate heat exchanger replacement parts and technical solution provider, with rich experience and high efficient work 24*7. we can provide exact parts with the fastest delivery time in the business.
With a large supply chain and inventory, we can provide any plate/gasket model/material combination.

What we do:

We can supply the replacement parts of AL, GEA, Tranter, APV, Sondex, ITT, Mueller, Schmitt-Bretten, API, Vicarb, etc.
Aiks makes sure all the spare parts are compatible with OEM. We guarantee every plate sold with an equal or longer warranty period compared to the original manufacturer.
From a single plate to a complete plate pack, we can meet all your requirements.

Our advantage

Our efforts continue to provide high level standards, assuring short delivery times to ensure proper servicing.

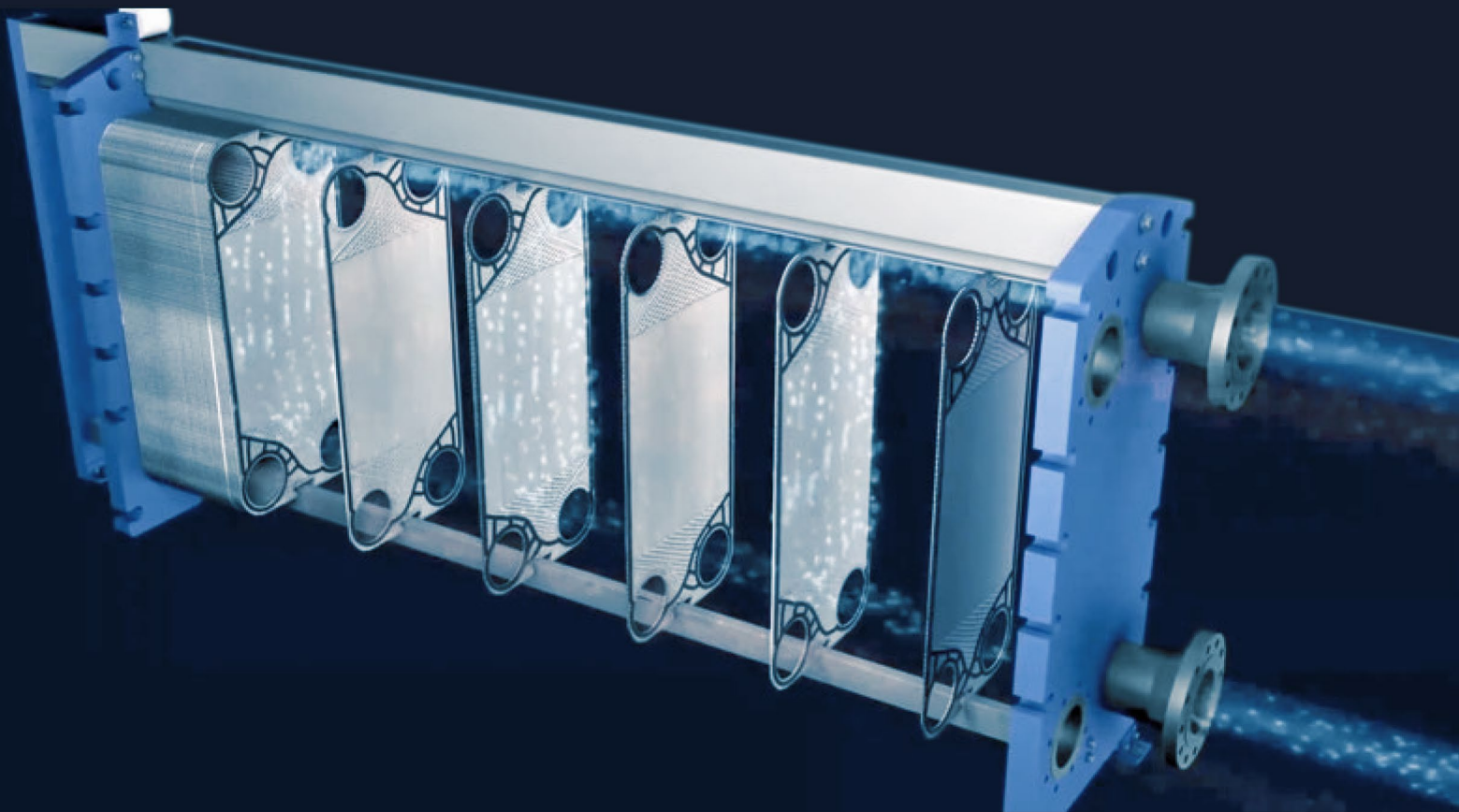
PLATE HEAT EXCHANGER

WORKING PRINCIPLE

A plate and frame heat exchanger as known as gasketed plate heat exchanger is a high efficiency heat exchanger assembled from metal sheets with a corrugated pattern and different kind of gaskets. Plate heat exchangers are the ideal equipment for heat exchange between liquid-liquid and liquid-vapor. In the case of the same pressure loss, the heat transfer coefficient is 3-5 times higher than that of the tube heat exchanger, but the floor space is one-third of the tube heat exchanger, and the heat recovery rate can be as high as 90% or more.

STRUCTURE

Gasketed plate heat exchanger is mainly composed of plates, sealing gaskets, fixed plate and movable plate, carrying bar, guiding bar, column, support column, tightening bolts and nuts, frame feet, etc.



PRODUCT FOR APPLICATIONS

Plate heat exchangers are widely used in various fields. Products for all applications: PETROLEUM&CHEMICAL / METALLURGICAL / PHARMACEUTICALS / FOOD&BEVERAGE / HVAC / MARINE...

We have a team of specialists ready to assist, whatever your fluid handling application challenge is speak to one of our experts to solve your problems.



REFRIGERATION



SEWAGE TREATMENT



POWER



HVAC



HEAVY INDUSTRY



MINING



MARINE



DISTRICT HEATING



OIL / GAS



MEDICINE



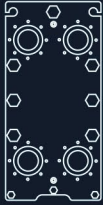
FOOD / BEVERAGE



CHEMICALS



CASE PRESENTATION



Industrial process section heat exchanger unit

Food factory all stainless steel sanitary heat exchanger

District heating station heat exchange equipment unit

Ammonia refrigeration supporting heat exchange equipment

Sewage treatment wide channel heat exchanger

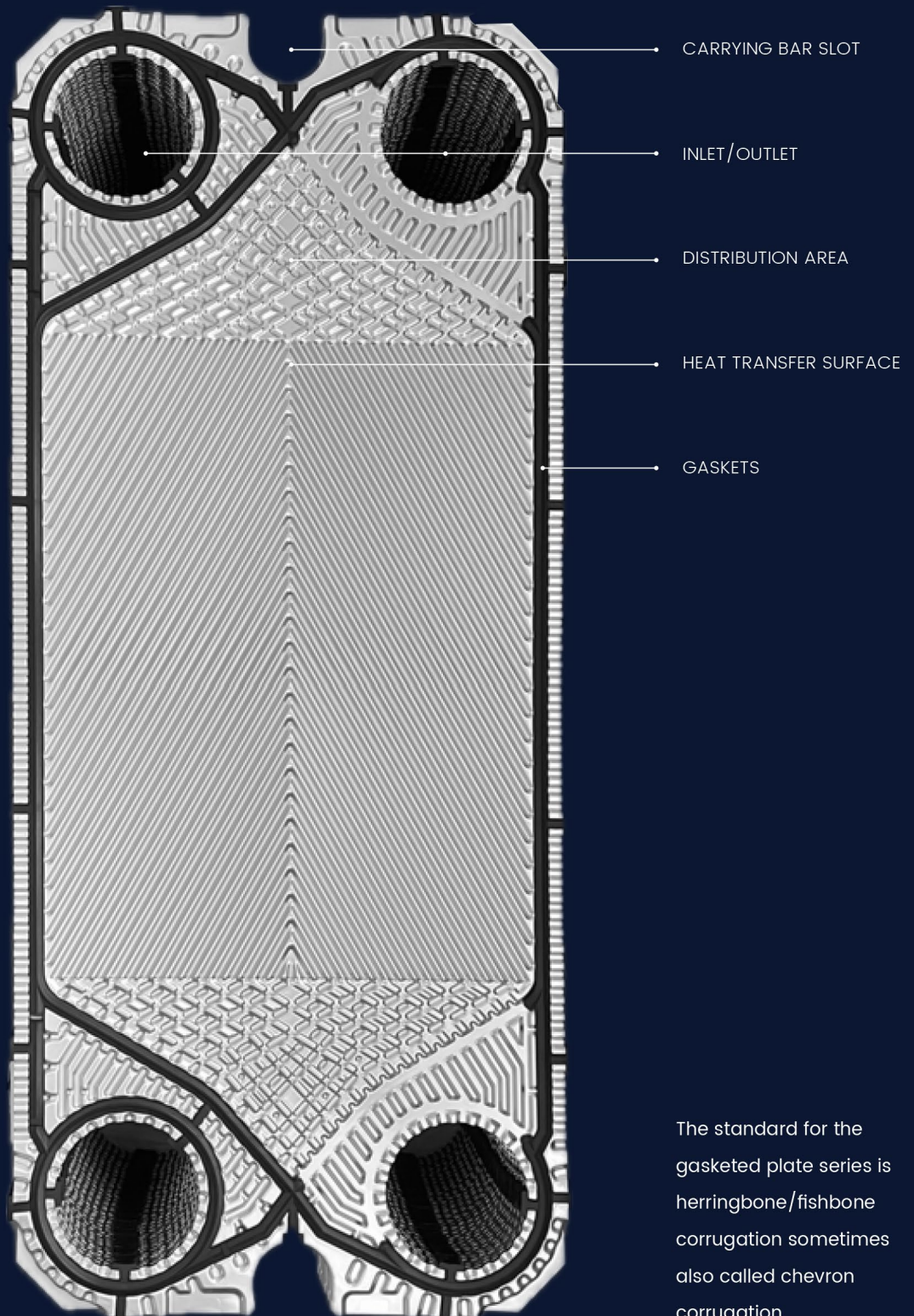
Power plant closed cooling water heat exchanger

High-rise office building unit

Fine chemical production process heat exchange equipment



HEAT EXCHANGER PLATES



FULL RANGE OF MATERIALS

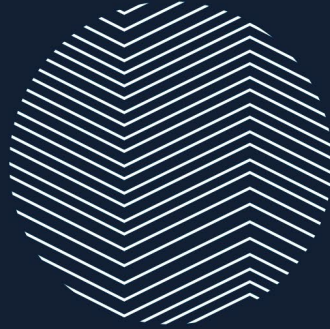
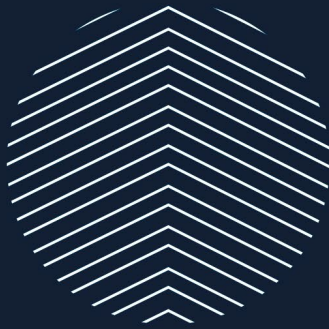
All the plate raw materials are chosen in high quality standard, and special materials like Titanium are from the same source those of the big international brands. In order to keep plates stable performance and long service lifetime, we only adopt the high level one in the plate thickness.

PLATE QUALITY



Material	Fluid Media
*Stainless steel(Alloy 304, Alloy 316)	Water, river water, edible oil, mineral oil
*Ti, Ti-Pd	Seawater, brine and chloride
*20Cr, 18Ni, 6Mo(254SMO)	Sulfuric acid, sparse salified aqueous solution, inorganic aqueous solution
*Nickel	High temperature, high concentration caustic soda
*Hastelloy(C276, D205)	Concentrated sulfuric acid, hydrochloric acid, phosphoric acid

TYPE OF HEAT PLATE



HIGH -THETA PLATE

High turbulent flow
High heat transfer coefficient
Perfect temperature approach
High pressure drop

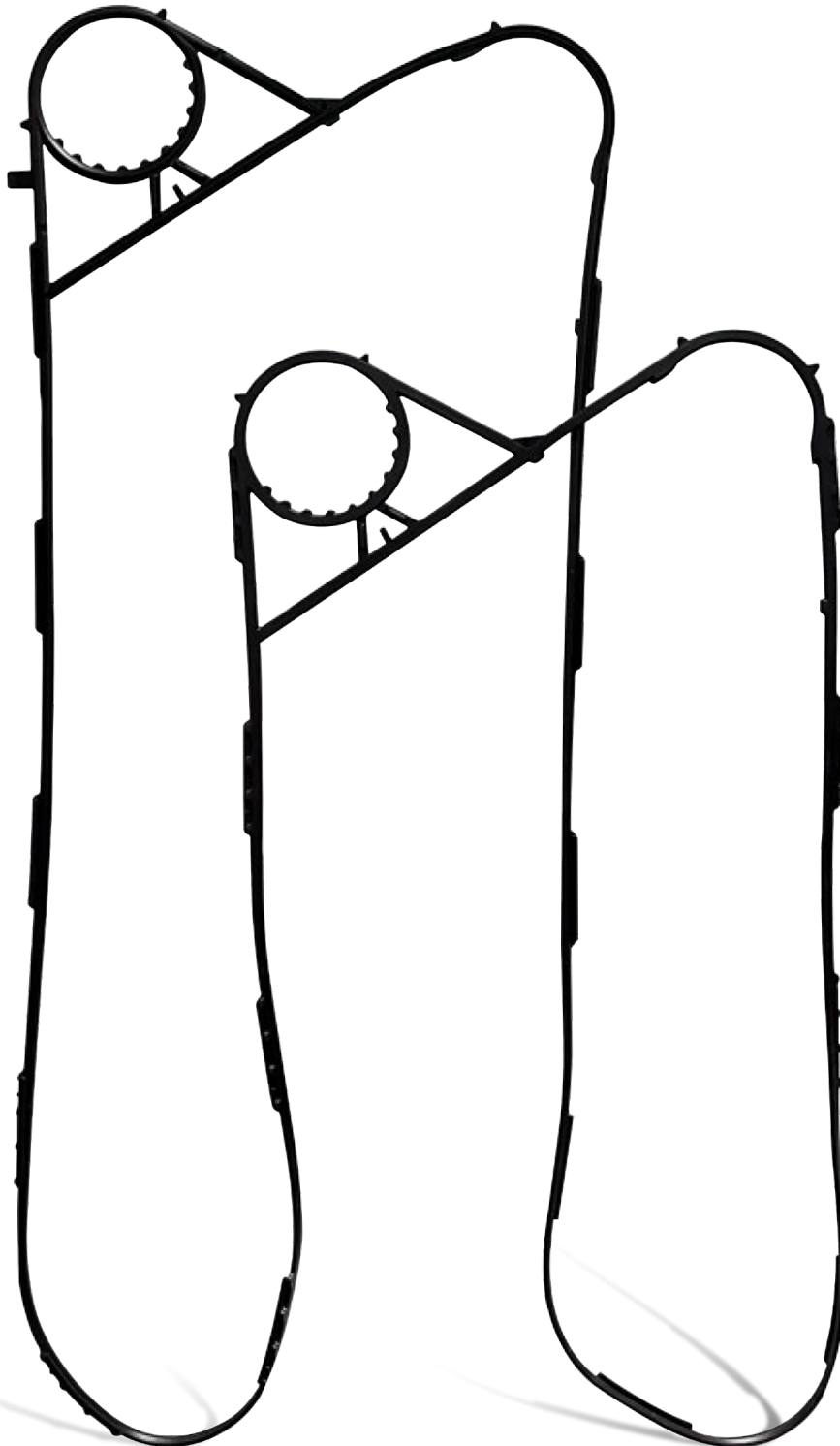


LOW -THETA PLATE

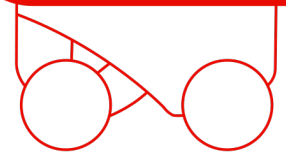
Low turbulent flow
Low heat transfer coefficient
High temperature approach
Low pressure drop

CHEVRON CORRUGATION >

HEAT EXCHANGER GASKETS



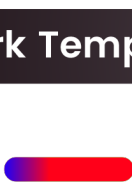



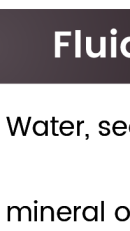

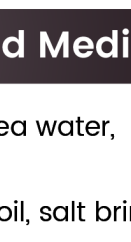




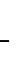




We use imported rubber raw materials to ensure excellent product quality, good stability, high quality of finished products and a long life time.



We have our own R&D laboratory with advanced testing equipment and testing methods, all in accordance with international standards, testing raw materials and heat exchange media, and formulating different solutions for different media.

GASKET QUALITY



Material	Work Temperature	Fluid Media	Color Code
NBR	-20°C  +120°C	Water, sea water, mineral oil, salt brine.	
EPDM	-35°C  +150°C	Hot water, steam, acid, alkali.	
VITON A	0°C  +180°C	High temperature resistance, strong oxidants, oil, acid and alkali.	
VITON G	0°C  +200°C	High temperature resistance, strong oxidants, oil, acid and alkali.	
HNBR	-20°C  +150°C	High temperature mineral oil and water.	
EPDMHT	-35°C  +165°C	High temperature water, steam, oil , alkali and acid.	
NBRHT	-20°C  +130°C	Water, Sea Water, mineral oil, Salt brine.	
CR	-40°C  +125°C	Ammonia and various fluo- rine-containing refrigerants.	

TYPE OF HEAT EXCHANGER GASKETS

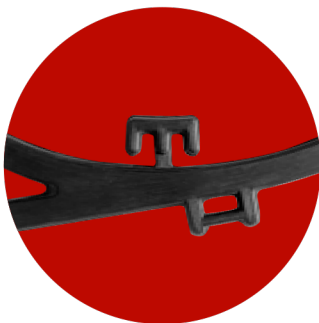


There are many brands of plate heat exchangers, and there are various forms of plates and rubber gaskets. In order to make them more effective, the installation methods of the gaskets are designed in different types, such as CLIP ON, SNAP ON, GLUED and PARACLIP.



CLIP IN (PARACLIP)

The clip in gaskets (Paraclip) are attached to the plates by small nubs around the perimeter of the gasket which snap into matching holes.



CLIP ON

The unique design allows easy and fast clip-on installation for sure sealing and simple removal.



GLUED

The most stable way which requires less down-time to install, remove or clean, can be specified for most units.

BRAZED HEAT EXCHANGER

—
THREADED AND SWEAT
CONNECTIONS AVAILABLE

—
UNIQUE HERRINGBONE
PLATE PATTERN

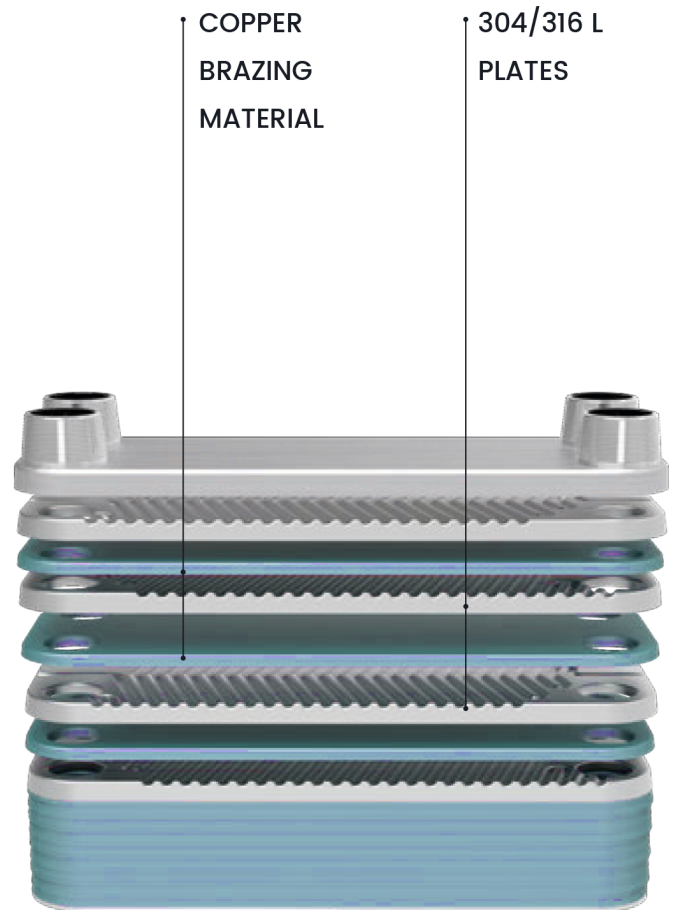
—
SEAL PLATE

The brazed plate heat exchanger is the most compact heat exchanger on the market today. Its high heat transfer efficiency in combination with its compact design equals a compact heat exchanger for a wide range of heating, cooling, evaporating and condensing duties.



BRAZED HEAT EXCHANGER APPLICATION

The brazed heat exchanger consists of thin corrugated stainless steel plates brazed together with copper to form a self-contained unit. Brazing the plates together eliminates the need for a frame, gaskets, bolts and the carrying bar. The result is a heat exchanger that costs less, weighs less, holds less refrigerant and takes up less space.



DX EVAPORATORS/CHILLERS

WATER-COOLED CONDENSERS

ECONOMIZERS/SUBCOOLERS

DESUPERHEATERS/HEAT RECLAIM

HYDRAULIC OIL COOLERS

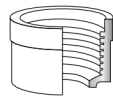
RADIANT FLOOR/SNOW MELT HEAT EXCHANGERS

PRODUCT LIST

Model	B (mm)	C (mm)	D (mm)	E (mm)	A dim (mm)	Max Flow Rate (m ³ /h)	Design Pressure (bar)	304/316
AS10	191.5	73.5	154	40	8+1.05*N	8	30/45	●
AS14	208	78	172	42	8.6+2.3*N	8	30/45	●
AS16	209.5	73.5	172	40	7.5+2.26*N	8	30/45	●
AS18	315.5	73.5	278	40	10+1.28*N	8	30/45	●
AS26	310	111	250	50	10.6+2.35*N	18	30/45	●
AS30	313	113	250	50	10.6+2.35*N	18	30/45	●
AS52	526	111	466	50	9+2.32*N	18	30/45	●
ASC70	526	111	466	50	9+2.32*N	18	30/45	●
AS60	527	113	466	50	9+2.32*N	18	30/45	●
AS62	529	113	476	60	10+2.35*N	18	30/45	●
AS65	535	120.5	476	60	10+2.35*N	18	30/45	●
AS76	618	191	519	92	11+2.7*N	42	30/45	●
AS110	616	191	519	92	11+2.7*N	42	30/45	●
AS112	616	191	519	92	11+2.7*N	42	30/45	●
ASC112	616	191	519	92	11+2.7*N	42	30/45	●
AS200	742	324	624	205	14+2.7*N	100	30/45	●
AS300	990	366	816 (861)	213.5	17+2.675*N	200	30/45	●

CONNECTION MODE

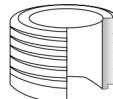
NPT INTERNAL



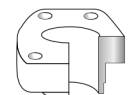
FLANGE



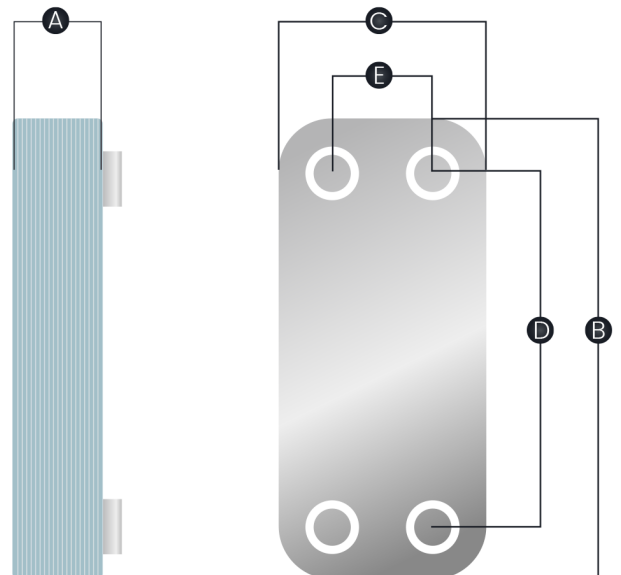
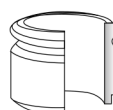
NPT EXTERNAL



SAE FLANGE



WELDED PIPE



CONTACT US NOW AND YOU CAN GET

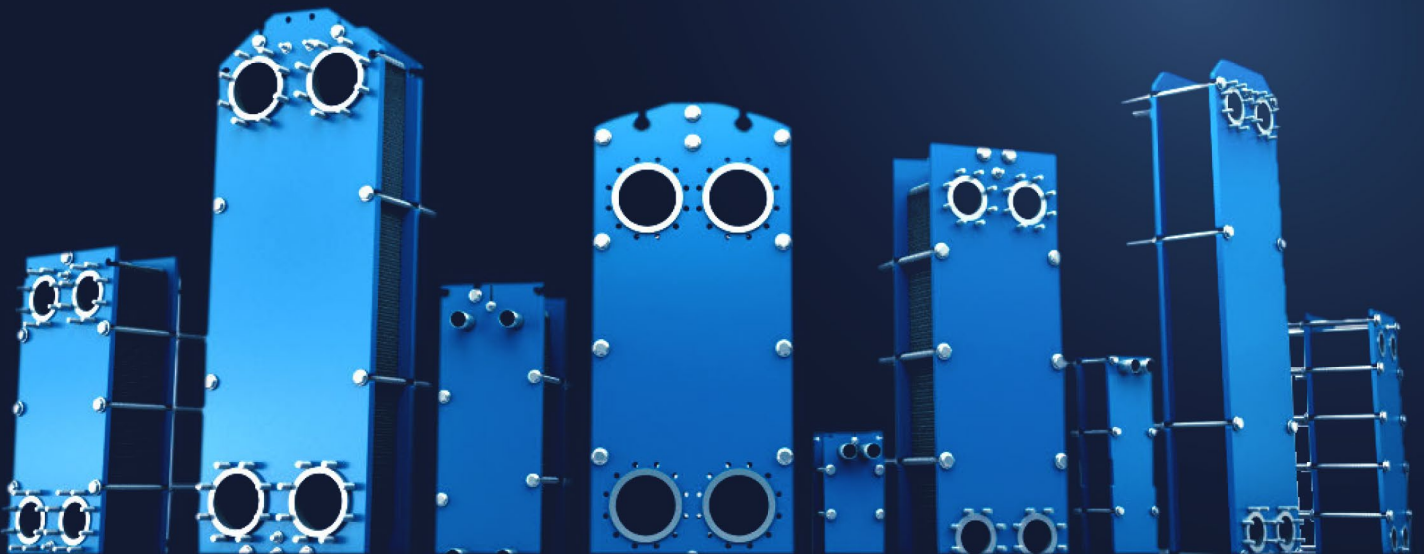
- CALCULATION FOR PLATE HEAT EXCHANGERS;
- SOLUTIONS FOR WHOLE WORKING CONDITIONS;
- SAMPLE OF PLATE AND GASKET



info@spi-shalaby.com

44-46 Al-Sabtia Street, Hawd Al-Zuhur - Bulaq, Cairo Governorate, Egypt
Heika Mall, 5th Floor, Office 504

www.spi-shalaby.com



PRODUCT LIST

ALFA LAVAL 



ALFA LAVAL 



MODEL	GASKET	PLATE	MODEL	GASKET	PLATE
M3	●	●	P36	●	●
M6	●	●	XT5B	●	●
M6M	●	●	XT5M	●	●
M10B	●	●	XT8B	●	●
M10M	●	●	XT8M	●	●
M15B	●	●	AM10	●	●
M15M	●	●	AM20	●	●
T20B	●	●	AM20B	●	●
T20P	●	●	TL15B	●	●
M20M	●	●	TS35P	●	●
MX25B	●	●	EC500	●	●
MX25M	●	●	AC400	●	●
M30	●	●	AC600	●	●
TL6B	●	●	T20BW	●	●
TL10B	●	●	TL3B	●	●
TL10P	●	●	XT2B	●	●
TS6M	●	●	TL35S	●	●
TS20M	●	●	TL35B	●	●
CLIP6	●	●	A10B	●	●
CLIP8	●	●	AX30BW	●	
CLIP10	●	●	T20S	●	●
M6MW	●	●	T20M	●	●
M10BW	●	●	MA30S	●	●
MK15BW	●	●	MA30M	●	●
T20MW	●	●	AX30B	●	●
MA30W	●	●	XT45M	●	●
A15B	●	●	XT50M	●	●
AK20	●	●	XAQ80	●	●
P16	●	●	New XT15M	●	
P26	●	●	New TL3P	●	

PRODUCT LIST

ALFA LAVAL 



ALFA LAVAL 



MODEL	GASKET	PLATE	MODEL	GASKET	PLATE
New TK20BW	●				
New P13	●				
New XT35P	●	●			
New A35	●				
New M10MX	●				
New XUQA80	●				
New XT10M	●	●			
New XT10B	●	●			
New XT6B	●				
New XT6P	●	●			
New TS50M	●				
New CLIP3	●				
New XT25B	●				
New XT21M	●	●			
New XT25M	●	●			
New M6MX	●	●			
New A20	●				
New EC350	●				
New EC650	●	●			
New M3X	●				
New XT25P	●				

PRODUCT LIST

GEA



GEA



MODEL	GASKET	PLATE	MODEL	GASKET	PLATE
VT04	●	●	NT50X	●	●
VT10	●	●	NT80M	●	●
VT130	●		New NT25M	●	
VT20	●	●	New NT100T	●	●
VT20P	●	●	New NT100M	●	●
VT2508	●	●	New NT100X	●	●
VT40	●	●	New NT150S	●	●
VT402	●	●	New NT150L	●	●
VT405	●	●	New VT405P	●	●
VT40M	●	●	New CT193	●	
VT40P	●	●	New CT187	●	
VT80	●	●	New LWC150L	●	●
VT805	●	●	New NX150X	●	
VT80M	●	●	New LWC100T	●	
FA161	●	●	New LWC100M	●	
FA184	●	●	New LWC100X	●	
FA192	●	●	New LWC150S	●	
N40	●	●	New NX100X	●	
NT100M/T/X	●	●	New NL80M	●	
NT150L/M/S	●	●	New NH350S	●	
NT250L	●	●	New LWC250S	●	
NT250M	●	●	New LWC250L	●	
NT250S	●	●	New FA192	●	
NT350M	●	●			
NT350S	●	●			
NT500T	●	●			
NT500M	●	●			
NT50M	●	●			
NT50T	●	●			

PRODUCT LIST



HISAKA



HISAKA



MODEL	GASKET	PLATE	MODEL	GASKET	PLATE
LX025A	●	●	New LX595	●	
LX195	●	●	New UX10	●	●
LX20	●	●	New RX195A	●	
LX325A	●	●	New LX30A	●	
LX525A	●	●	New UX996A	●	●
LX526B	●	●			
LX595A	●	●			
LX625A	●	●			
RX146B	●	●			
RX185A	●	●			
RX186A	●	●			
RX30A	●	●			
UX100	●	●			
UX20	●	●			
UX216	●	●			
UX226	●	●			
UX315B	●	●			
UX40	●	●			
UX416	●	●			
UX496	●	●			
UX80	●	●			
UX90	●	●			
UX925	●	●			
LX016A	●	●			
RX395A	●	●			
UX056	●	●			
New UX005A	●				
New LX10A	●				
New UX10A	●				
New UX20A	●				

PRODUCT LIST

APV



APV



MODEL	GASKET	PLATE	MODEL	GASKET	PLATE
A055	●	●	Q055D	●	●
A085	●	●	Q055E	●	●
A145	●	●	Q080D	●	
B063S	●	●	Q080E	●	●
B110S	●	●	R10	●	●
B134S	●	●	R5	●	●
B158S	●	●	SR1	●	●
B205S	●	●	SR14	●	●
HI2	●	●	SR14AD	●	●
HI7	●	●	SR14GD	●	●
HX	●		SR2	●	●
J060	●	●	SR23PV	●	●
J076	●		SR3	●	●
J092	●	●	SR35	●	●
J107	●	●	SR6AA	●	●
J185	●	●	SR6AG	●	●
K34	●	●	SR6GH	●	●
K55	●	●	SR6GL	●	●
K71	●	●	SR9	●	●
M107	●	●	SR9GA	●	
M185	●		T4	●	●
M60	●	●	TR9AL	●	●
M92	●	●	TR9AV	●	●
N25	●	●	TR9GL	●	●
N35	●	●	TR9GN	●	●
N50	●	●	R55	●	●
PI05	●	●	L080ES	●	●
PI90	●	●	LR4		●
Q030D	●	●	New TR1	●	●
Q030E	●	●	New B063	●	

PRODUCT LIST

SONDEX

SONDEX

MODEL	GASKET	PLATE	MODEL	GASKET	PLATE
S100	●	●	S39	●	●
S110	●	●	S4A	●	●
S113	●	●	S41	●	●
S121	●	●	S41A	●	●
S121A	●		S42	●	●
S130	●	●	S42A	●	
S14	●	●	S43	●	●
S14A	●	●	S43A	●	
S145	●	●	S43AD	●	●
S15	●		S47	●	●
S16	●		S47A	●	●
S16B	●	●	S47B	●	●
S17	●	●	S50	●	●
S18	●		S58	●	
S188	●	●	S62	●	●
S19	●	●	S62A	●	●
S19A	●	●	S63	●	●
S20	●	●	S64	●	●
S20A	●	●	S65	●	●
S201	●	●	S65A	●	
S21	●	●	S67	●	●
S21A	●	●	S7	●	
S22	●	●	S7A	●	●
S22A	●		S8	●	●
S25	●		S8A	●	●
S30	●	●	S81	●	●
S31	●	●	S81A	●	
S31A	●	●	S83	●	●
S37	●	●	S86	●	●
S38	●		S86B	●	●

PRODUCT LIST

SONDEX



MODEL	GASKET	PLATE	MODEL	GASKET	PLATE
S9	●				
S9A	●	●			
SF123	●	●			
SF25	●	●			
SF25A	●	●			
SFD22	●	●			
SFD13	●	●			
New S1	●				
New S43B	●				
New S44A	●				
New S62B	●				
New S65B	●				
New SW40	●				
New SW40A	●				
New SW122	●				
New SW189	●				
New SF160	●				
New S100B	●				
New SF53	●	●			
New S36	●	●			
New SW26A	●				
New SW54	●				
New S80	●				
New S120	●				
New S187	●				
New SFD23	●				
New S86SE	●				
New S251	●				
New S62AE	●				

PRODUCT LIST

TRANTER

TRANTER

MODEL	GASKET	PLATE	MODEL	GASKET	PLATE
GC16	●	●	GX54	●	●
GC26	●	●	GX60	●	●
GC30	●	●	GX64	●	●
GC51	●	●	GX7	●	●
GC54	●	●	GX85	●	●
GC60	●	●	GX91	●	●
GC8	●	●	<small>New</small> GCD044	●	
GC9	●	●	<small>New</small> GCP044	●	
GF187	●	●	<small>New</small> GCD054	●	
GF57	●	●	<small>New</small> GC52	●	●
GF97	●	●	<small>New</small> GX265	●	●
GLI3	●	●	<small>New</small> GLI52	●	
GLI45	●	●	<small>New</small> GT155	●	
GL205	●	●	<small>New</small> GT165	●	
GL230	●	●	<small>New</small> GC50	●	
GL330	●	●	<small>New</small> O6	●	
GL85	●	●	<small>New</small> GFP187	●	
GXI00	●	●	<small>New</small> GXP60	●	
GXI18	●	●	<small>New</small> GXP64	●	
GXI2	●	●	<small>New</small> GXPI00	●	
GXI40	●	●			
GXI45	●	●			
GXI8	●	●			
GXI80	●	●			
GX205	●	●			
GX26	●	●			
GX37	●	●			
GX42	●	●			
GX51	●	●			

PRODUCT LIST

FUNKE



FUNKE



MODEL	GASKET	PLATE
FP04	●	●
FP05	●	●
FP08	●	●
FP09	●	●
FP10	●	●
FP100	●	●
FP112	●	●
FP120	●	●
FP130	●	●
FP14	●	●
FP16	●	●
FP19	●	●
FP190	●	●
FP20	●	●
FP205	●	●
FP22	●	●
FP30	●	●
FP31	●	●
FP40	●	●
FP405	●	●
FP41	●	●
FP42	●	●
FP50	●	●
FP60	●	●
FP62	●	●
FP70	●	●
FP71	●	●
FP80	●	●
FP81	●	●

MODEL	GASKET	PLATE
FP82	●	●
New FP02	●	
New FP206	●	●
New FP150	●	
New FP3030	●	
New FP3017	●	

PRODUCT LIST

SCHMIDT

SCHMIDT

MODEL	GASKET	PLATE	MODEL	GASKET	PLATE
SIGMA106	●	●	New SIGMA96/s	●	
SIGMA107	●		New STAR 90	●	●
SIGMA114	●	●	New STAR 45	●	●
SIGMA13	●	●	New SIGMA22	●	●
SIGMA136	●		New SIGMAX49	●	●
SIGMA156	●	●			
SIGMA19	●				
SIGMA25	●	●			
SIGMA26	●	●			
SIGMA27	●	●			
SIGMAX29	●	●			
SIGMA35	●	●			
SIGMA36	●	●			
SIGMA37	●	●			
SIGMA38	●				
SIGMA45	●	●			
SIGMA48	●	●			
SIGMA55	●	●			
SIGMA56	●	●			
SIGMA64	●				
SIGMA66	●	●			
SIGMA7	●	●			
SIGMA76	●	●			
SIGMA9	●	●			
SIGMA90	●	●			
SIGMA96	●	●			
New SIGMAX25	●	●			
New SIGMAX35	●	●			
New SIGMAX55	●				

PRODUCT LIST

Thermowave

LHE

MODEL	GASKET	PLATE	MODEL	GASKET	PLATE
TL150PP	●	●	HT061	●	●
TL150SS	●	●	HT101	●	●
TL200PP	●	●	HT102	●	●
TL200SS	●	●	HT103	●	●
TL250PP	●	●	HT150	●	●
TL250SS	●	●	HT151	●	●
TL400PP	●	●	HT231	●	●
TL400SS	●	●	HT232	●	●
TL500PP	●	●	HT234	●	●
TL500SS	●	●	HT313	●	●
TL50PP	●	●	New HT152	●	
TL650PP	●	●	New HT233	●	
TL650SS	●	●	New HT351	●	
TL850PP	●	●			
TL850SS	●	●			
TL90PP	●	●			
TL90SS	●	●			
New TL250PP W	●				
New TL250PS W	●				
New TL650SS W	●				
New TL650PS W	●				
New TL500SS W	●				
New TL850SS W	●				
New TL850PS W	●				
New TL850SS W	●				

PRODUCT LIST



VICARB





FISCHER




MODEL	GASKET	PLATE	MODEL	GASKET	PLATE
V10	●		E18	●	●
V100	●	●	E16	●	●
V110	●	●	E40	●	●
V13	●	●	E65	●	●
V130	●	●	New E18P	●	
V170	●	●	New E40P	●	
V2	●	●	New E61P	●	
V20	●	●			
V28	●	●			
V4	●	●			
V45	●	●			
V60	●	●			
V8	●	●			
V85	●	●			
V956	●	●			



 www.spi-shalaby.com

 info@spi-shalaby.com

 +201 156 369 888
+201 003 825 753
+201 156 368 777

44-46 Al-Sabtia Street, Hawd Al-Zuhur - Bulaq, Cairo Governorate, Egypt
Heika Mall, 5th Floor, Office 504